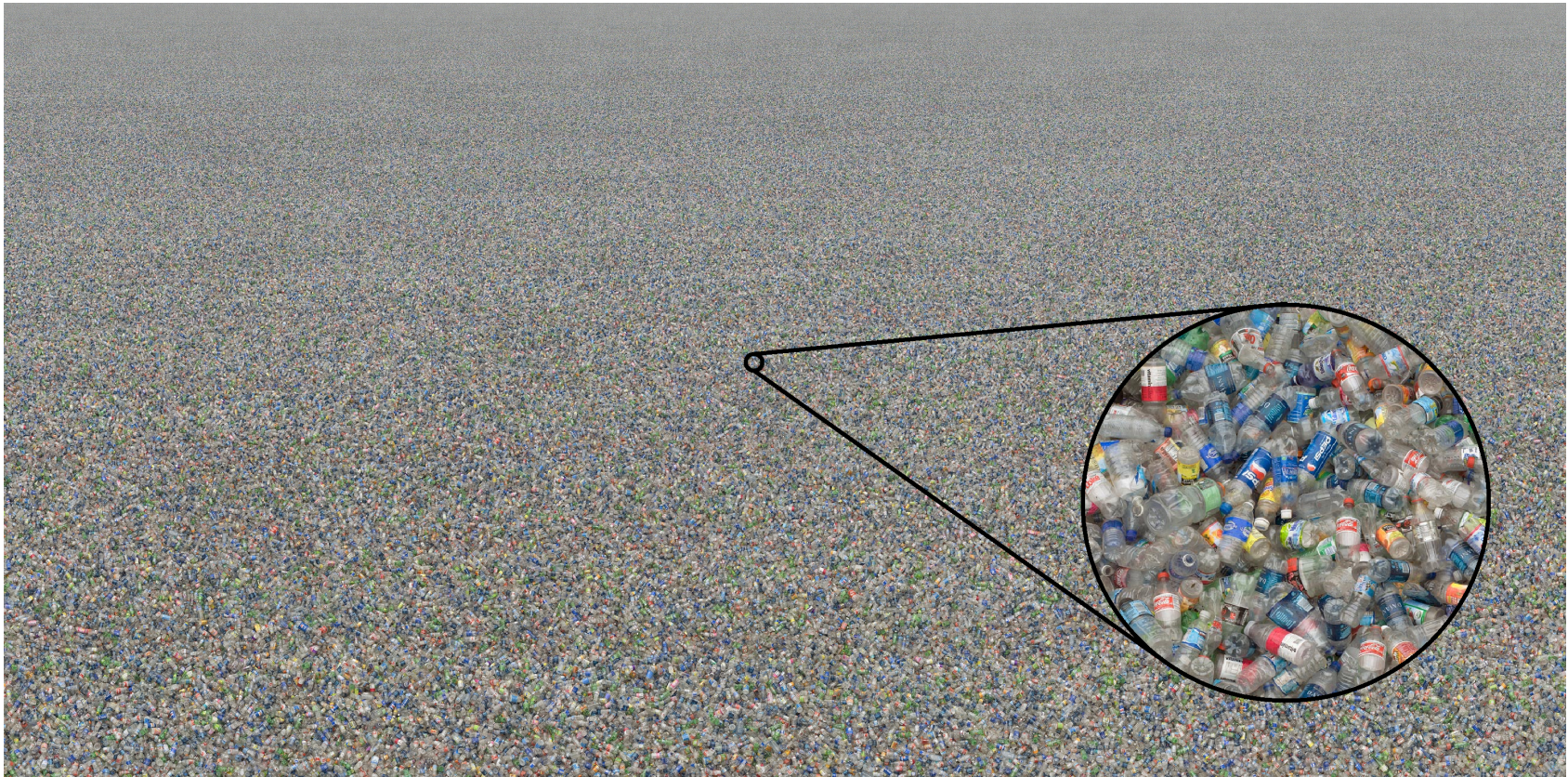


**green b**

**Green Canteen**

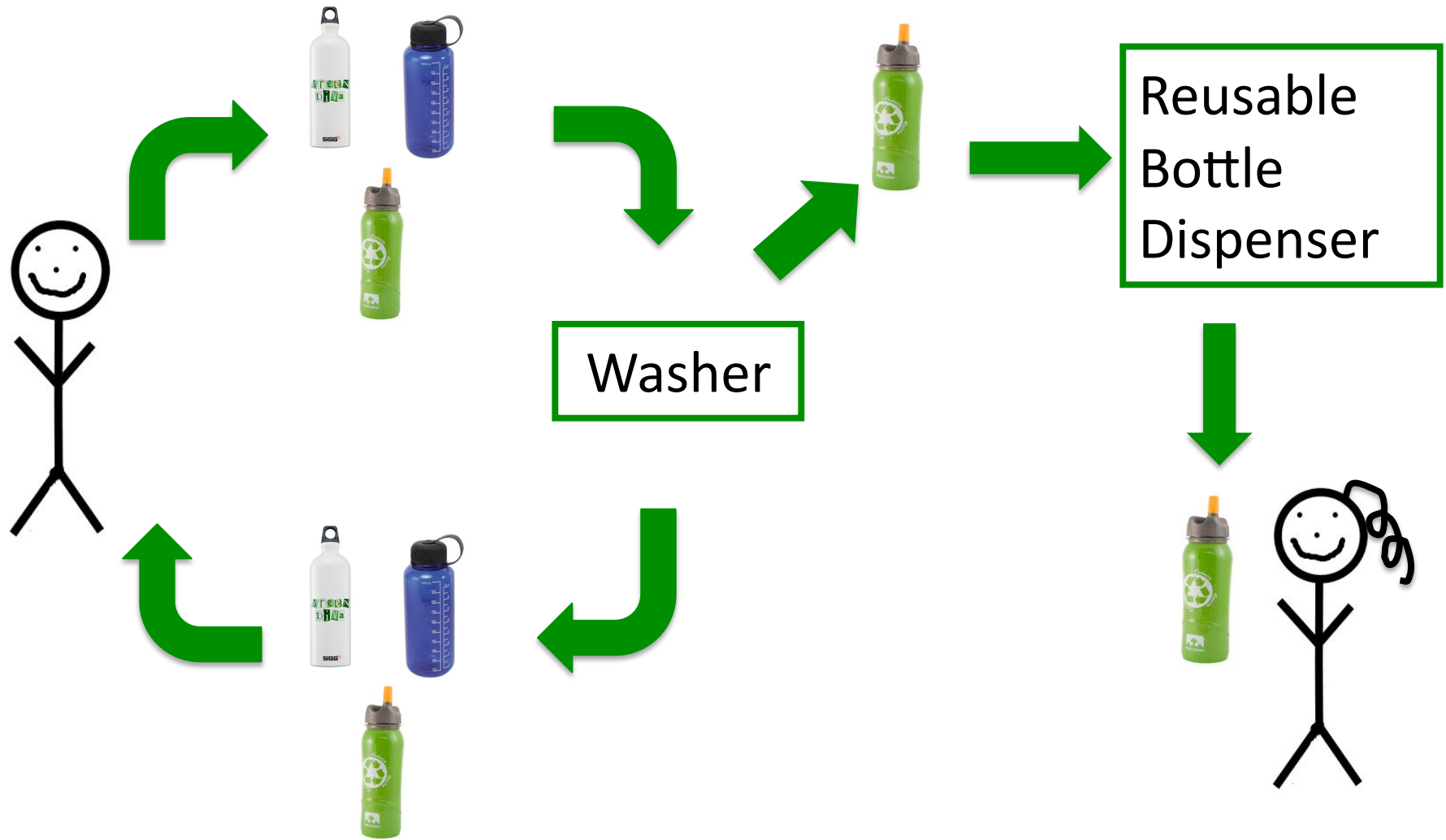
# Problem

---



# Product Vision

---



# Key Risks

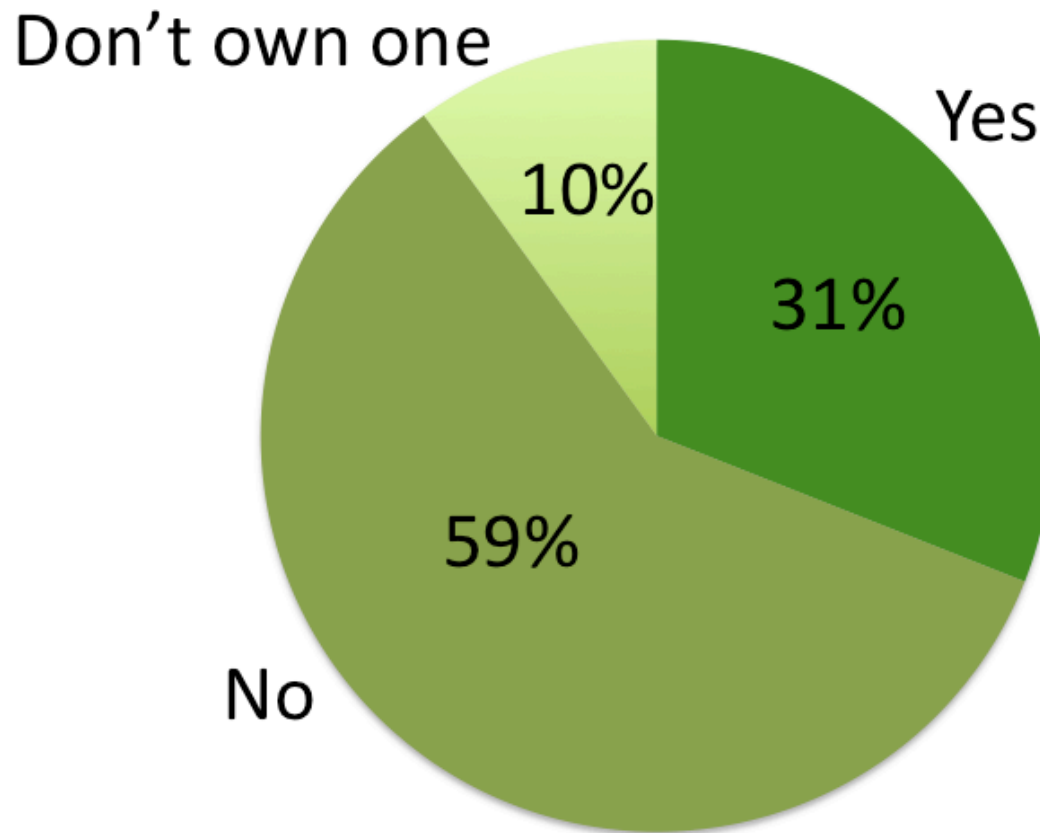
---

- **Make an impact?**
- **Technically feasible?**
- **Marketable?**

# Key Risk #1 – Impact?

---

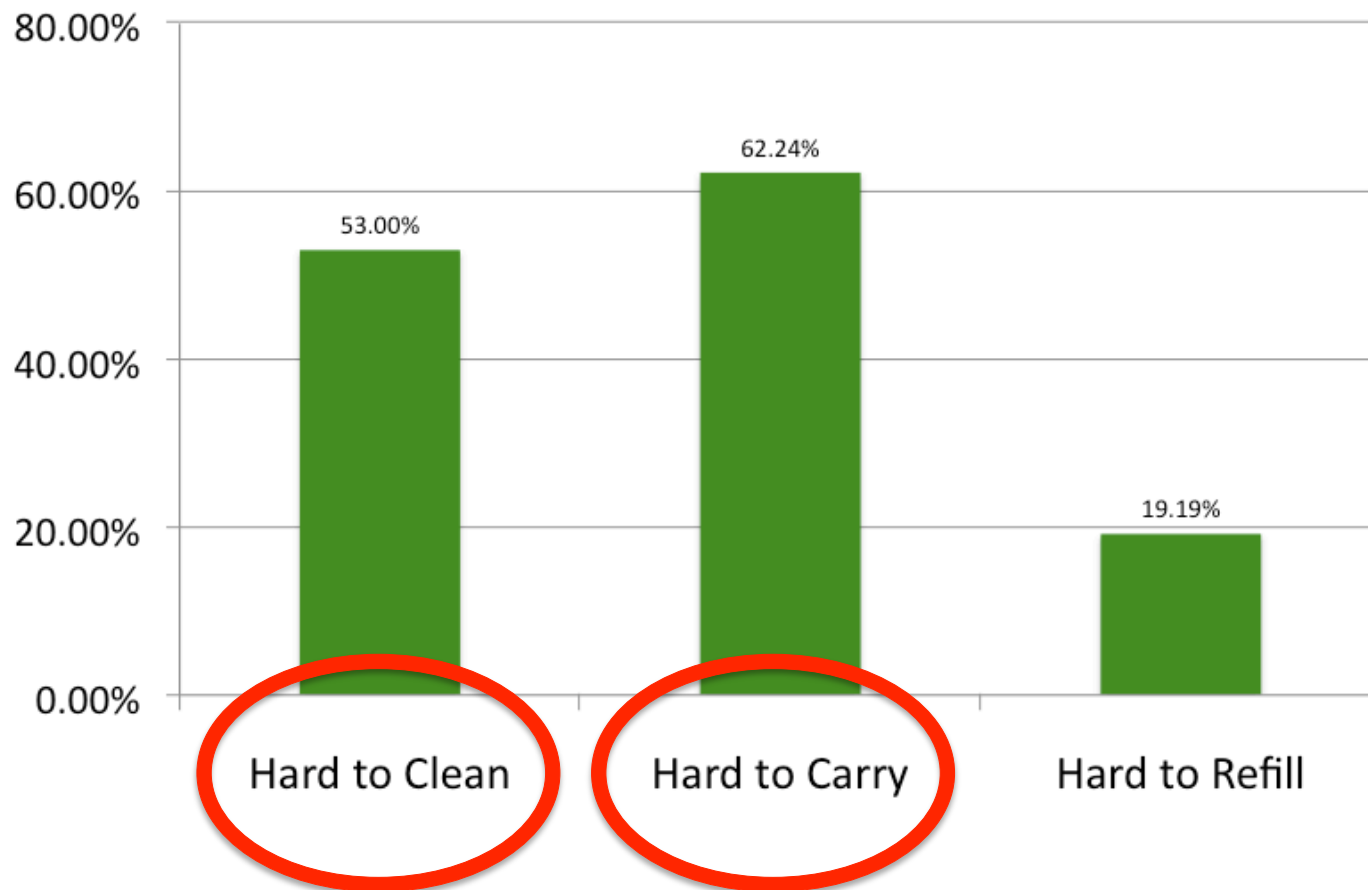
**Do you use your reusable water bottle as often as you would like?**



# Key Risk #1 – Impact?

---

Why don't you use your water bottle?



# Product Contract

---

Customer Need	Product Attributes	Engineering Specifications
Cleans reusable water bottles	Washing capability	UV radiation of 6,600 $\mu$ W per square cm and hot water at at least 70° C
Have on-site receptacle for reusable bottles	Bottle size	Up to 4-in diameter uniform bottle size
Dispenses sanitary reusable bottles	Dispensing mechanism	Holds 20 bottles, Automated
Can be found near drinking fountains	Easily installed	Water in-line and waste water out-line

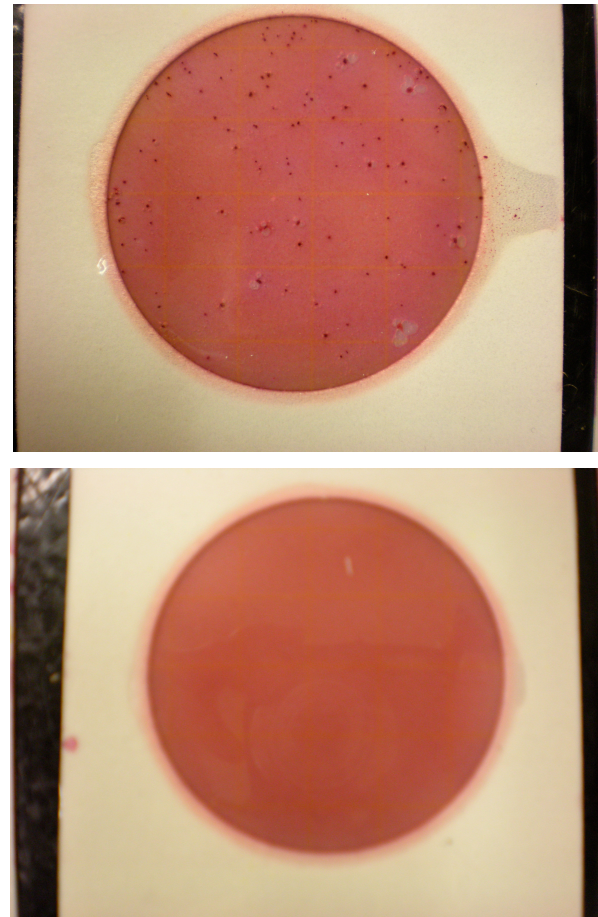
# Key Risk #2 - Washer

---

**Heating element**



**UV light**





# Safety

---



# Key Risk #3 - Marketability

---

- **MIT Campus Dining**
  - **Reasonable price: ~ \$100 per washer**
  - **Low maintenance**

# Next Steps...

---

- **Detecting returned bottle quality**
- **Payment**
- **Marketing**

# Thank You

---

**We look forward to seeing you in  
Pappalardo!**