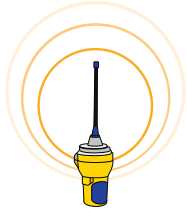


Customer Need

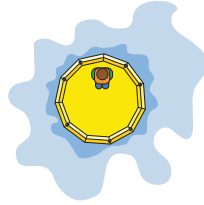
Minutes matter when it comes to an emergency rescue.



Flare guns only last 7-8 seconds.



Standard Emergency Rescue Beacons, EPIRBs, only locate a search area.



A life raft or individual person is difficult to spot in the ocean.

SkyBeacon Features



Daytime visibility of 7 miles



Nighttime visibility of 2.5 miles



Standard boating flag and light distress signals



Radar detectable



Flotation capability equivalent of a Type 1 life jacket



Lifetime of 3 days

Thank You

David Wallace
Rich Wiesman
Sangbae Kim
Tony Hu
Linda Sutliff
Andy Hamilton
Arni Lehto
Eric Statz
James Penn
Dick Fenner
Bill Cormier
Joe Cronin
Jim Dudley
Steve Haberek

Chevalley Duhart
Lauren Hernley
Paul Piraino
Eric Lorgus
Henry Marx
Melanie Hood
Gene Day
Paul Ansolabehere
Anagram Balloon
Philadelphia Ship Preservation Guild
NASAR
Landfall Navigation
Boston Paintball

Team Purple

Members

Alejandro Aguirre
Kuljot Anand
Cecilia Cantu
Jeremy deGuzman
Nifer Fasman
Angela Hojnaki
Elina Hu
Laura Matloff

Frederick Moore
Jill Oliveira
Chase Olle
Jason Pier
Nathan Porter
Madeline Salazar
Sarah Southerland
Nick Torgerson

Lab Instructors

Sangbae Kim

Rich Wiesman

Lab Mentors

Andy Hamilton
Arni Lehto
James Penn

Eric Statz
Linda Sutliff

**SKYBEACON**

2009purple@mit.edu



Market



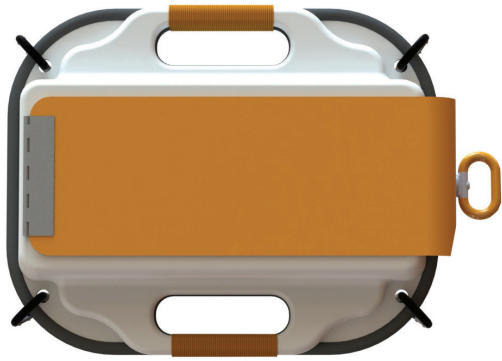
Target market includes boats between 16 and 65 feet



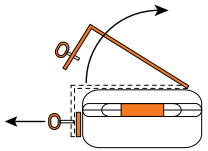
Large market potential: 11 million US target market boats



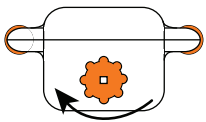
Price is \$130



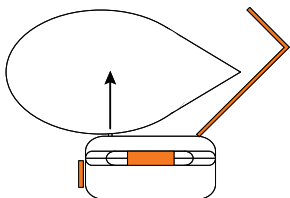
Deployment Steps



1 Pull handle and lift lid



2 Twist knob and wait to fill



3 Pull up and remove balloon

Three-piece balloon: Made of aluminized mylar and displays the international boating distress flag.



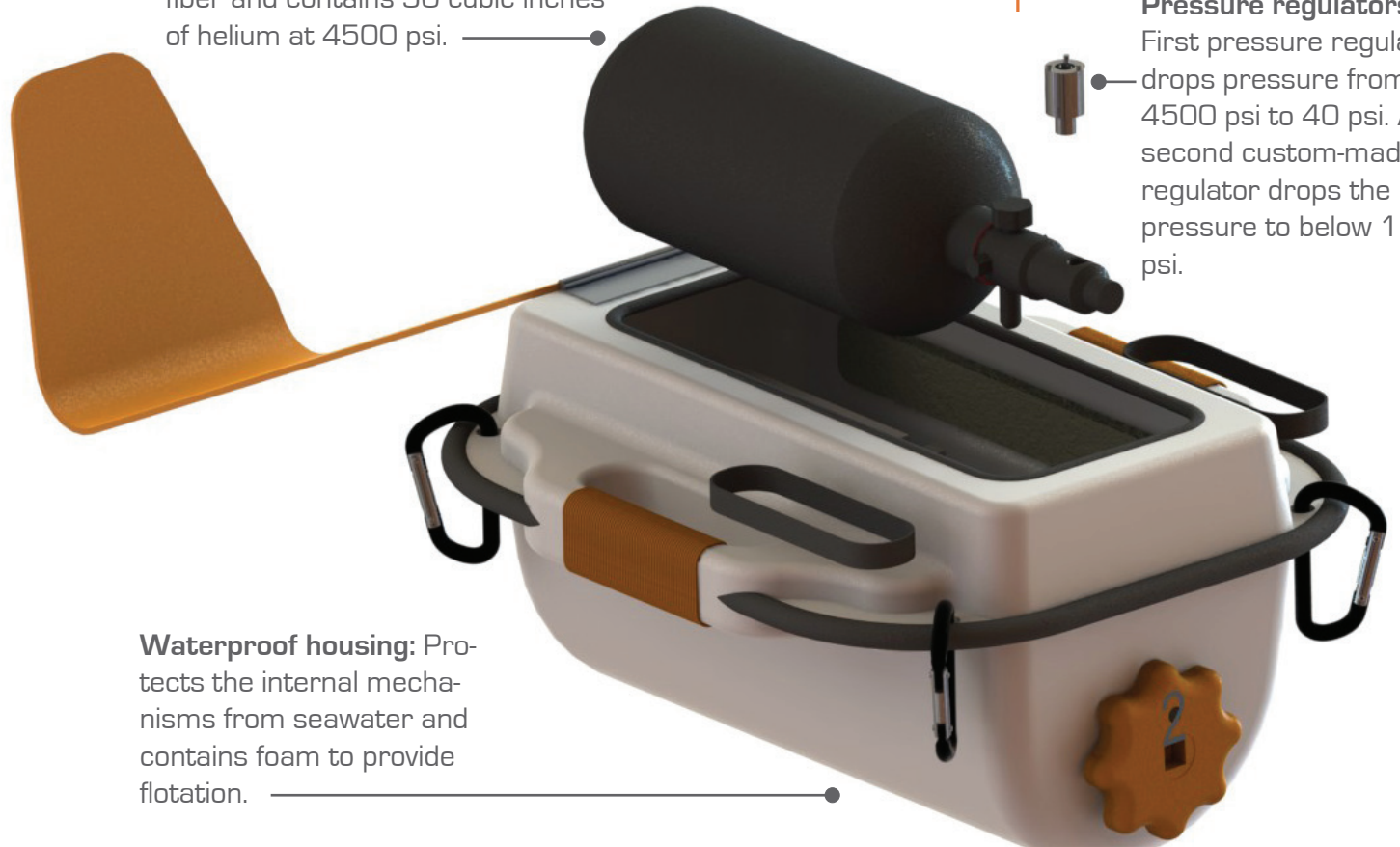
Tether spool: stores the 50 foot tether



Electronics: Waterproof capsule houses a microcontroller and flashes two LEDs in a standard distress signal.

Helium canister: Made of carbon fiber and contains 90 cubic inches of helium at 4500 psi.

Pressure regulators: First pressure regulator drops pressure from 4500 psi to 40 psi. A second custom-made regulator drops the pressure to below 15 psi.



Waterproof housing: Protects the internal mechanisms from seawater and contains foam to provide flotation.